

GETTING TO THE FACULTY OF PHILOSOPHY

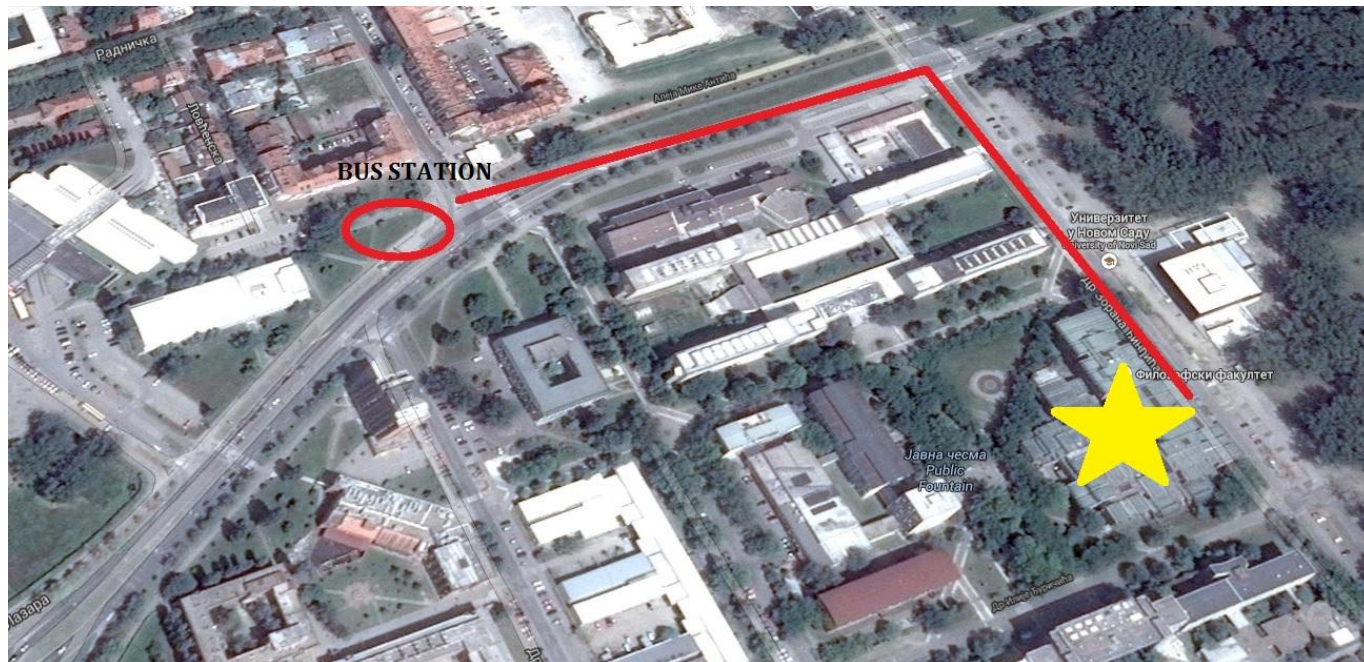
Dear guest, welcome to Novi Sad! Our city is the administrative seat of the province of Vojvodina and the second largest city in Serbia. The Faculty of Philosophy is located at the bank of the Danube river and is relatively close to the city centre and the main bus and train stations. Here are the instructions for reaching the Faculty from two locations.

FROM THE MAIN TRAIN/BUS STATION

Novi Sad's main train and bus stations are conveniently located next to each other. To reach the Faculty of Philosophy, after exiting the station, **take the bus number 4 at the station indicated at the photo below:**



You should buy the ticket from the bus driver, at the front door. The price of a single ticket is 55 dinars. Upon entering the bus, **exit at the 6th stop on the corner of Stražilovska street and Cara Lazara boulevard**. From here, go across the pedestrian crossing to your left and head straight. **At the corner of Stevana Musića street and Cara Lazara boulevard, take a right and head straight** once more, you should see the entrance to the Faculty after about 200 meters.



FROM THE CITY CENTRE

The Faculty of Philosophy is fairly close to the city centre and you can reach it on foot in about 20 minutes. We will use **the Name of Mary Church cathedral** as the starting point. Once you are at the cathedral, **head east along Modena street**.



Once you are at the traffic light, **continue straight towards Žarka Zrenjanina street.**



Continue walking **straight along Žarka Zrenjanina street**, which is named **Stražilovska street** after the first traffic light. After 700 meters, you will reach the crossroads. **At the corner of Stražilovska street and Cara Lazara boulevard, take a left.**



At the **corner of Cara Lazara boulevard and Stevana Musića street, take a right.**



After 200 meters, you will be at the Faculty of Philosophy.

